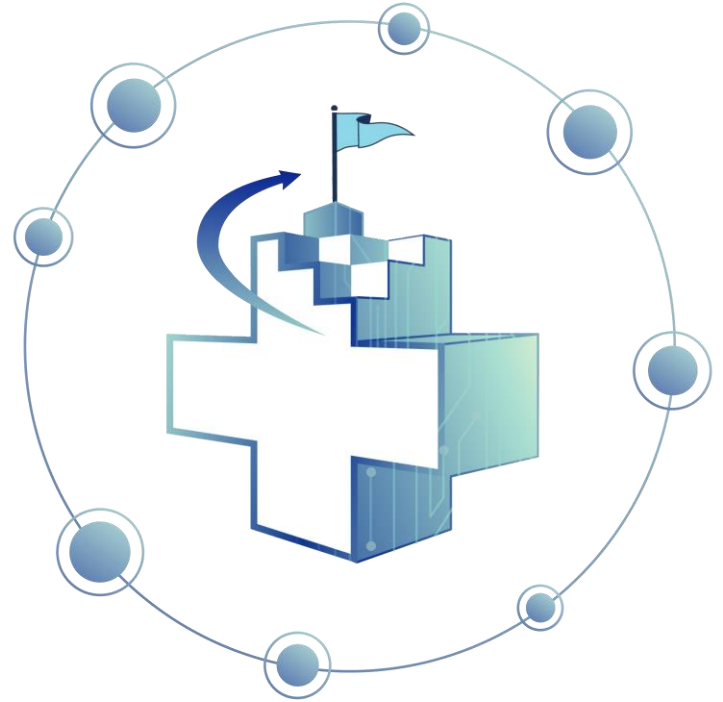
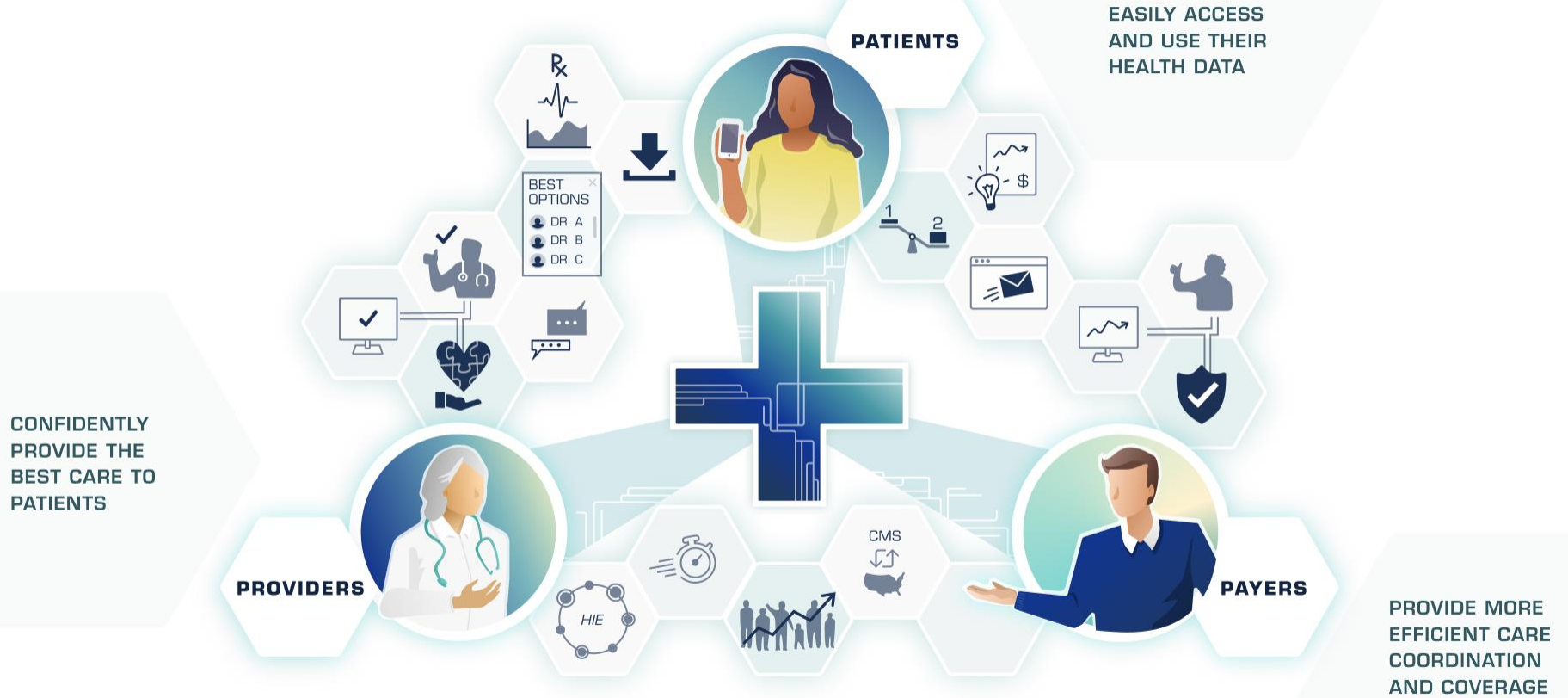


CMS Interoperability and Patient Access Final Rule

Denise St. Clair, PhD
Health Informatics Office
Policy Analyst, CMS



INTEROPERABLE HEALTH CARE DATA EXCHANGE...



enables coordinated care, improved health outcomes, and reduced cost.

PATIENT ACCESS

Empowering patients by giving them access to their health information so they can make the best informed decisions about their care, all while keeping that information safe and secure.

CONNECTING HEALTHCARE THROUGH DATA EXCHANGE

Driving to value-based care by promoting seamless data exchange across the care continuum.

TECHNOLOGY & STANDARDS

Promoting the use of the latest technology and standards to drive innovation and data exchange in healthcare.



**YOUR HEALTH DATA
WHEN YOU NEED IT MOST**

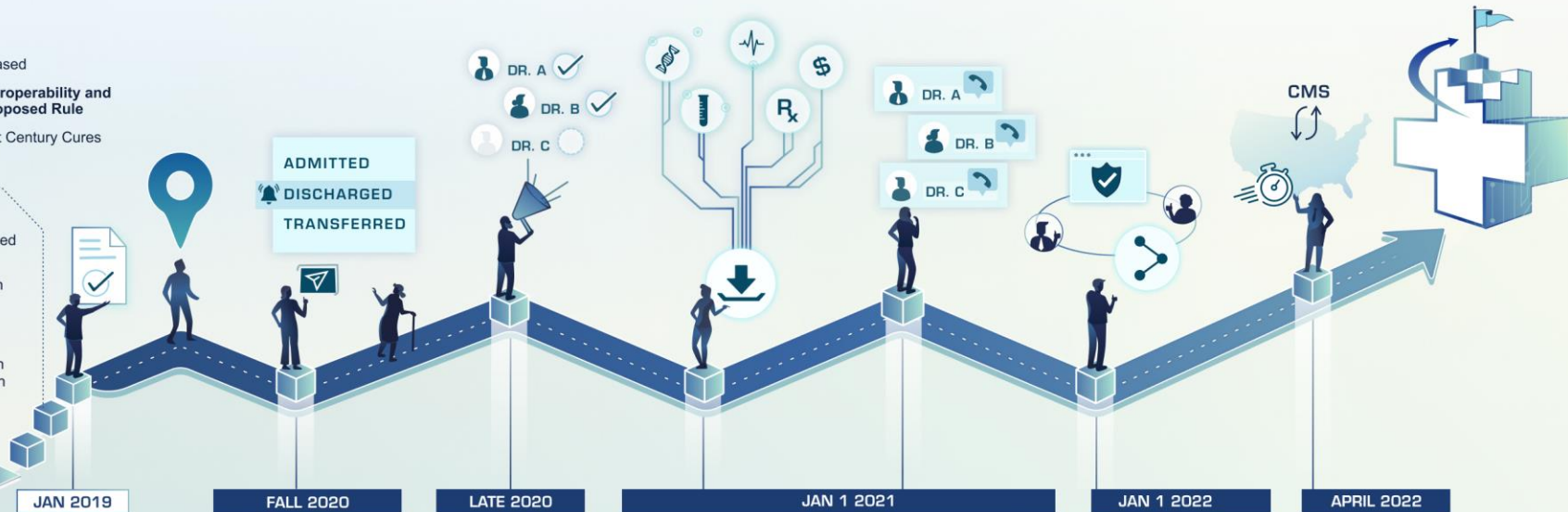
CMS INTEROPERABILITY & PATIENT ACCESS FINAL RULE



- 2019**
- Draft 2 TEFCA released
 - CMS publishes **Interoperability and Patient Access Proposed Rule**
 - ONC publishes 21st Century Cures Act Proposed Rule

- 2018**
- Draft TEFCA released
 - White House Executive Forum on Interoperability
 - CMS made data available to researchers through the Virtual Research Data Center

- **March 2018**
MyHealthEData and Blue Button 2.0 launched



JAN 2019

FALL 2020

LATE 2020

JAN 1 2021

JAN 1 2022

APRIL 2022

Providers are required to use **2015 Edition Certified EHR Technology**

Promoting Interoperability program requirements take effect for all providers

Hospitals send **event notifications** regarding admission, discharge, and transfer to other providers

Public reporting of clinician or hospital data blocking and providers without digital contact info in NPPES

Patient Access API
Patient health care claims and clinical info made available through standards-based APIs for Medicare Advantage, Medicaid and CHIP FFS, Medicaid and CHIP managed care, and QHPs on the FFEs

Provider Directory API
Payer Provider Directories made available through standards-based APIs

Payer-to-Payer data exchange
Payers required to exchange patient USCDI data upon request

Improved benefits coordination for dually eligible individuals

2019

2020

2021

2022

More information and implementation support:

<https://www.cms.gov/Regulations-and-Guidance/Guidance/Interoperability/index>

